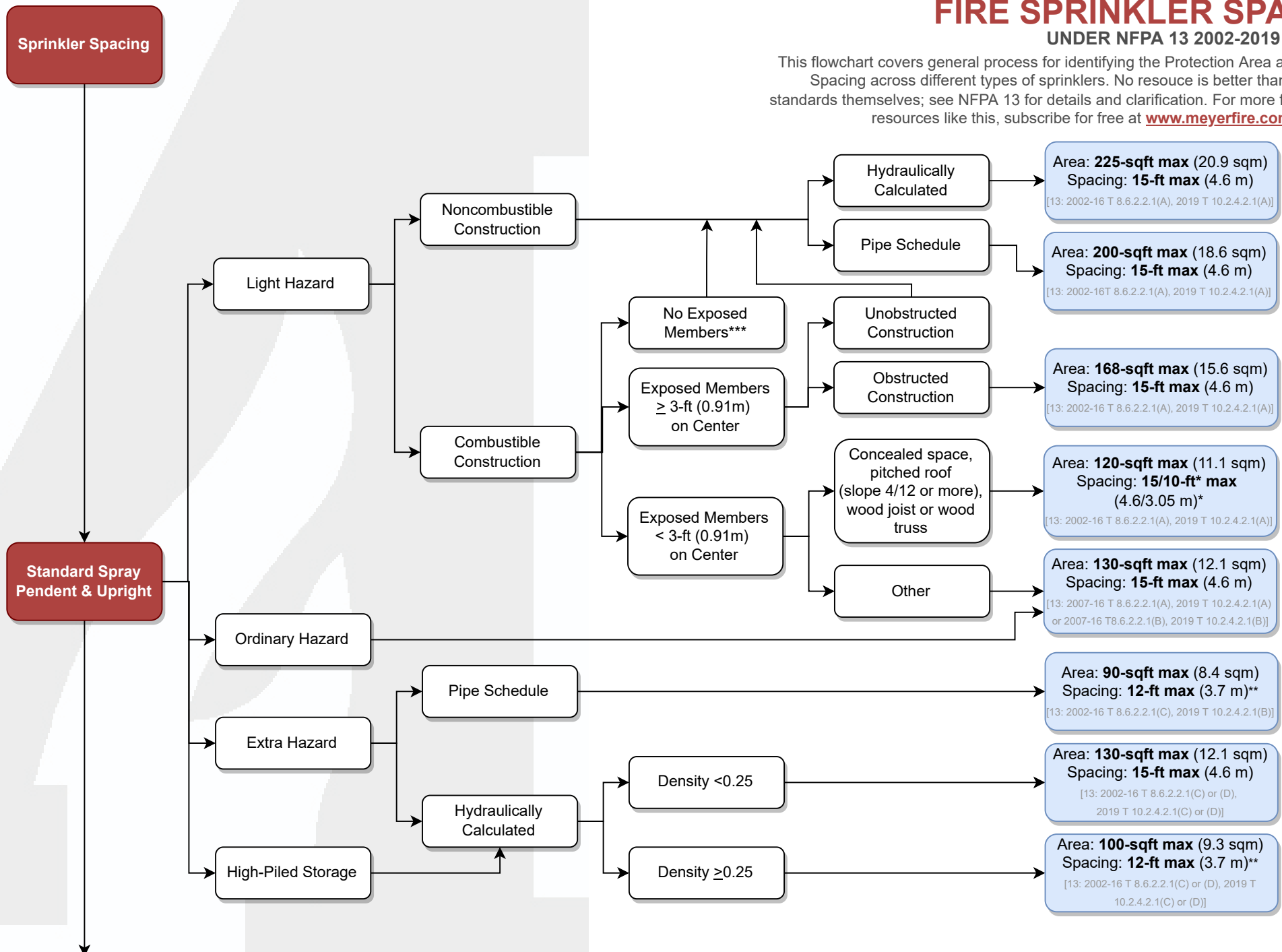


FIRE SPRINKLER SPACING

UNDER NFPA 13 2002-2019 EDITIONS

This flowchart covers general process for identifying the Protection Area and Maximum Spacing across different types of sprinklers. No resource is better than the codes & standards themselves; see NFPA 13 for details and clarification. For more fire protection resources like this, subscribe for free at www.meyerfire.com/subscribe.



*The spacing limitations are 15-ft (4.6 m) parallel to the slope, and 10-ft (3.05 m) perpendicular to the slope. NFPA 2002 is more restrictive.

**In buildings where exposed structural bays are 25-ft wide (7.6 m), a maximum spacing of 12'-6" (3.8 m) is permitted between sprinklers. See NFPA 13.

***NFPA 13 clarified that combustible construction with no exposed members could meet larger limitations starting in the 2013 Edition.

