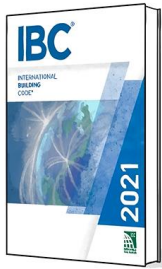
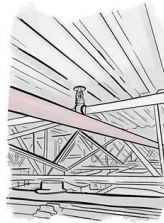
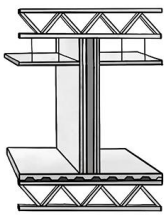


WHAT IS INCIDENTAL USE?



ICC CODES USED WITH PERMISSION. SEE LINK BELOW.



NOTES

A large area of the page is filled with a grid of small dots, intended for taking notes.

2021 International Building Code (IBC) Upgrade to Previous

Section Section Sep 2021

509.3 General
Incidental uses located within single occupancy or mixed occupancy buildings shall comply with the provisions of this section. Incidental uses are ancillary functions associated with a guest occupancy that generally pose a greater risk to that occupancy and are limited to those uses specified in Table 509.3.

Exception: Incidental uses within and serving a dwelling unit are not required to comply with this section.

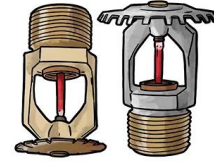
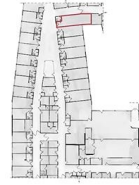
TABLE 509.3 INCIDENTAL USES

| ROOM OR AREA | SEPARATION AND/OR PROTECTION |
|---|---|
| Furniture room where any piece of equipment is over 400 Btu per hour input | 1 hour or provide automatic sprinkler system |
| Rooms with boilers where the output pressure of equipment is over 15 psi and 1/2 horsepower | 1 hour or provide automatic sprinkler system |
| Refrigerant machinery room | 1 hour or provide automatic sprinkler system |
| Hydrogen fuel gas rooms, not classified as Group I1 | 1 hour or provide automatic sprinkler system |
| Incinerator rooms | 2 hours or 1 hour or provide automatic sprinkler system |
| Paint shops, not classified as Group I1, located in occupancies other than Group F | 2 hours or 1 hour and provide automatic sprinkler system |
| In Group F occupancies, laboratories and vocational shops not classified as Group H1 | 1 hour or provide automatic sprinkler system |
| In Group I2 occupancies, laboratories not classified as Group H1 | 1 hour or provide automatic sprinkler system |
| In ambulatory care facilities, laboratories not classified as Group I1 | 1 hour or provide automatic sprinkler system |
| Lobby rooms over 100 square feet | 1 hour or provide automatic sprinkler system |
| In Group I2, storage rooms over 100 square feet | 1 hour |
| Group I-3 cells and Group I-2 patient rooms equipped with padded surfaces | 1 hour |
| In Group I2, physical plant maintenance shops | 1 hour |
| In ambulatory care facilities or Group I2 occupancies, waste and linen collection rooms with containers that have an aggregate volume of 10 cubic feet or greater | 1 hour |
| In other than ambulatory care facilities and Group I2 occupancies, waste and linen collection rooms over 100 square feet | 1 hour or provide automatic sprinkler system |
| In ambulatory care facilities or Group I2 occupancies, storage rooms greater than 100 square feet | 1 hour |
| Electrical installations and transformers | See Sections 110.26 through 110.34 and Sections 650.6 through 650.42 of NFPA 70 for protection and requirements |

For 0: 1-hour fire = 0.8000 hr²; 1-hour per square foot = 0.80 ft²; 1-hour material and 0.80 per hour = 0.8000 hr²; 1-hour = 1 hr²; 1-hour = 1 hr²; 1-hour = 1 hr²; 1-hour = 1 hr².

509.2 Occupancy classification
Incidental uses shall not be individually classified in accordance with Section 302.1. Incidental uses shall be included in the building occupancies within which they are located.

509.3 Area limitations



INCIDENTAL USE:

- ANCILLARY SPACE WITH HIGHER RISK
- LIMITED TO TABLE 509.1
- GENERALLY REQUIRE FIRE-RESISTANCE RATING AND/OR SPRINKLER PROTECTION



NOTES

A large grid of dotted lines for taking notes, consisting of approximately 30 columns and 40 rows.