

WHERE ARE SIDEWALLS USED?

SPRINKLER TYPES & ORIENTATIONS SERIES BY MEYERFIRE UNIVERSITY | DECEMBER 2022

SUMMARY

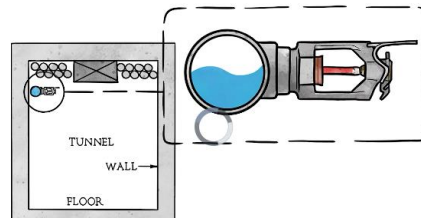
Sidewall sprinklers feature water coming from the side of a sprinkler, horizontally, through the orifice and to a deflector that throws water slightly up, mostly out, and downward from a sprinkler mounted to a vertical surface. Sidewall sprinklers are often used in the following situations:

- **Avoid Pipe in Certain Areas:** These could be areas prone to freezing, areas above sensitive or expensive equipment, or areas hard to access.
- **Meet Ceiling Clearances:** Could include spaces like tunnels or drive-lanes, where pipe would otherwise hang too low for the needs of the space.
- **Save on Material/Labor:** Sidewalls are often used in hotels, motels, apartments, or similar buildings with smaller repeating rooms. Sidewalls can save on additional pipe needed to reach the furthest sprinkler in a branch line.
- **Where Pipe Routing is Critical:** Sidewalls can be used for top-floors of buildings using a “birdcage” method, to avoid having pipe in an unconditioned space. They could also be used where the locations to route pipe are very limited, or is difficult to access.
- **Below Obstructions:** Sidewalls are commonly used to protect below obstructions where hanger spacing otherwise could not be achieved.
- **Special Cases:** Steel column protection, exterior exposure protection, and window sprinklers can make use of sidewalls for protection



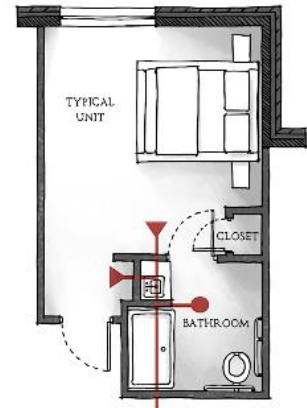
Avoid Pipe in Certain Areas

(Dry Sidewall sprinklers can often avoid the need for a dry-pipe system)



Keep or Maintain Clearances

(Sidewalls can avoid having to route pipe where it otherwise might interfere with clearances)



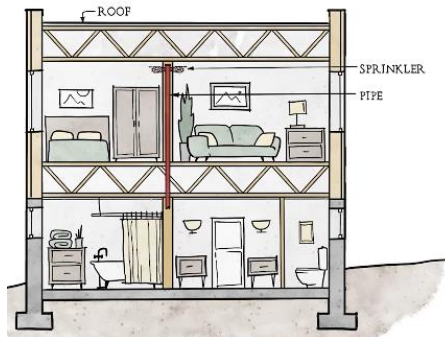
Save on Pipe/Labor

(Buildings like hotels or apartments can save on pipe serving the furthest sprinkler)



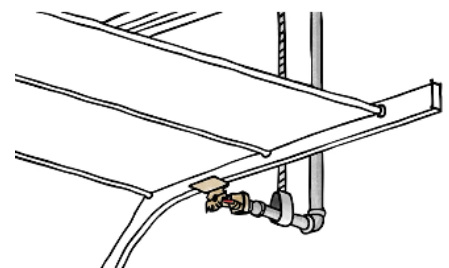
Hard-to-Access Areas

(Sidewalls can avoid accessing hard to reach areas)



“Birdcage” Method

(Sidewalls avoid the need for pipe in an attic space)



Below Obstructions & Special Situations

(Overhead doors, ducts, exposure, window protection or column protection could involve sidewalls)

VIDEO LINK

www.meyerfire.com/university/where-are-sidewall-sprinklers-used

GET MORE LIKE THIS

This page is from MeyerFire University. Get updates & more here:
[Join MeyerFire University](#) | [Course & Video Catalog](#) | [Video Library](#)