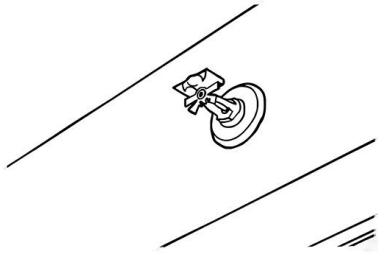
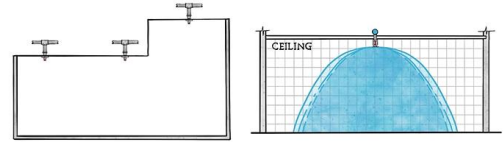


WHERE ARE SIDEWALL SPRINKLERS USED?

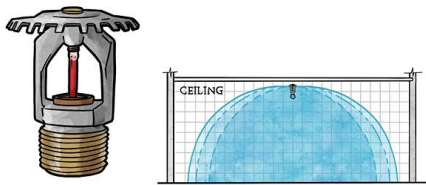


M

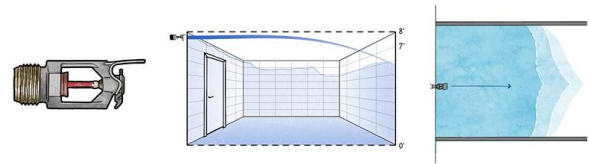
BELOW OR TO THE SIDE OF OBSTRUCTIONS



M



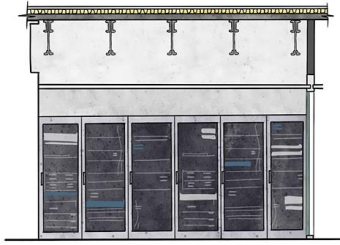
M



M

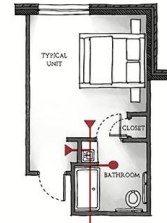
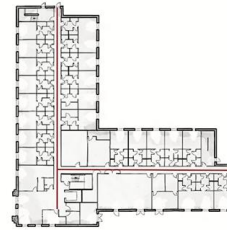
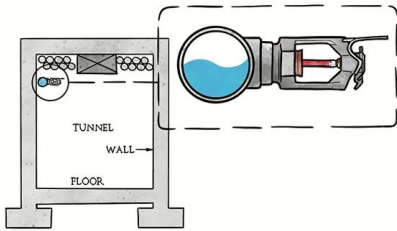
NOTES

A large area of dotted lines for taking notes.



M

M



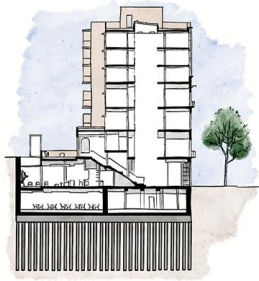
M

M

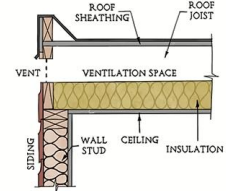
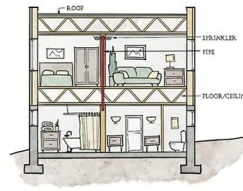
NOTES

Grid of dots for notes.

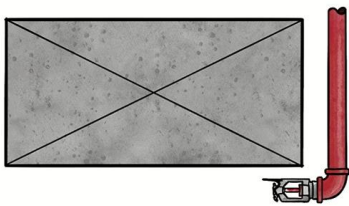
WHERE ARE SIDEWALL SPRINKLERS USED?



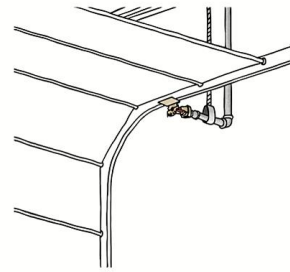
M



M



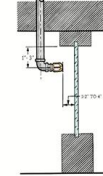
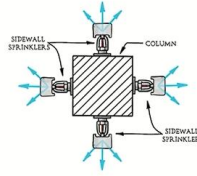
M



M

NOTES

Grid of dots for taking notes.



WHERE ARE SIDEWALL SPRINKLERS USED?

- TO AVOID ROUTING PIPE IN SPECIFIC AREAS
- TO ALLOW FOR GREATER CLEARANCES
- TO SAVE ON PIPE OR LABOR
- TO ROUTE PIPE IN SPECIFIC AREAS, SUCH AS HEATED AREAS OR WALLS
- WHEN PROTECTING BELOW OBSTRUCTIONS
- IN SPECIAL CASES



NOTES

A large grid of small dots for taking notes.