

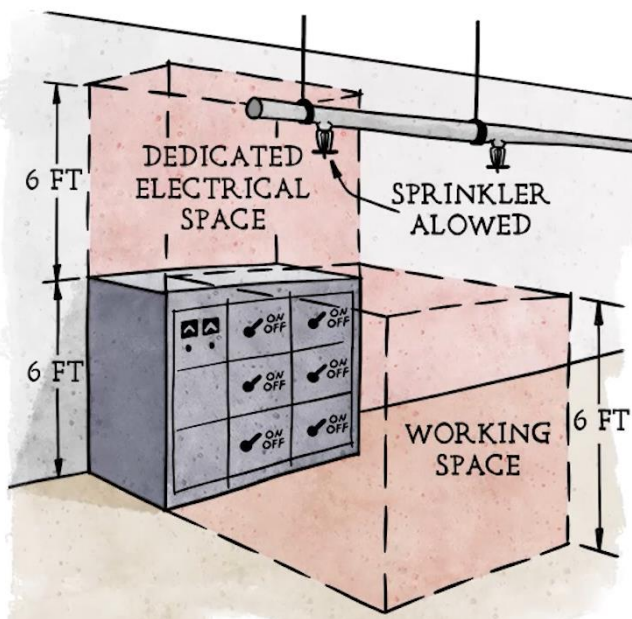
# PIPE ABOVE ELECTRICAL EQUIPMENT?

SPRINKLER COORDINATION WITH MEP SERIES BY MEYERFIRE UNIVERSITY | FEBRUARY 2023

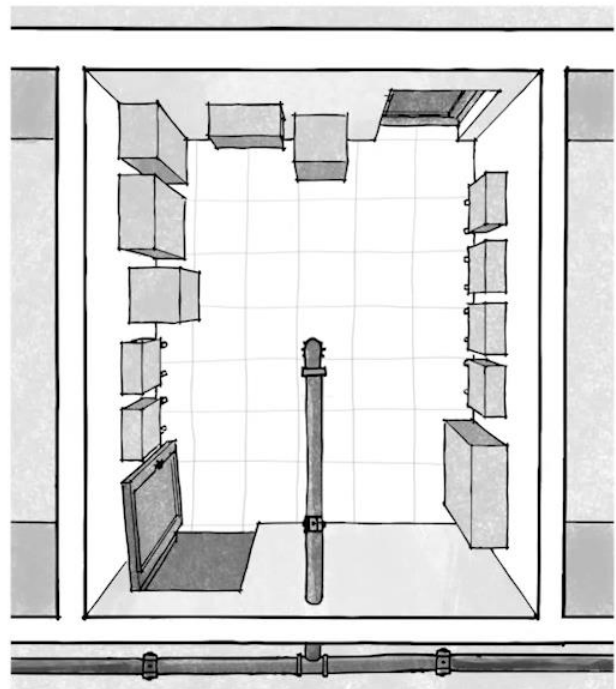
## SUMMARY

Can sprinkler pipe be routed near or above electrical equipment? The short answer is yes, but it's not preferred and additional issues need to be taken.

- NFPA 70, The National Electrical Code, requires dedicated electrical space in front, and above, electrical equipment.
- In general, the easiest and best way of meeting the requirements of Article 110.26(E) is to route sprinkler pipe above walkable areas.
- If routing above electrical equipment cannot be avoided, one alternative approach is to provide a drip pan above the equipment, such that leaks or drips from sprinkler pipe cannot reach the electrical equipment and is safety redirected away from the electrical equipment. This would meet Article 110.26(E)(1)(b) for protection of the electrical equipment.



Zones Required to be Free of Foreign (Non-Electrical) Systems  
(Based upon NFPA 70)



Routing Pipe Above Walkable Spaces  
(This is often the best approach to mitigate NFPA 70 issues)

## CODE/STANDARD REFERENCES



NFPA 70 – 2023: 110.26(3) – Dedicated Space for Electrical Equipment

## VIDEO LINK

[www.meyerfire.com/university/can-sprinkler-pipe-be-near-electrical-equipment](http://www.meyerfire.com/university/can-sprinkler-pipe-be-near-electrical-equipment)

## GET MORE LIKE THIS

This page is from MeyerFire University. Get updates & more here:  
[Join MeyerFire University](#) | [Course & Video Catalog](#) | [Video Library](#)