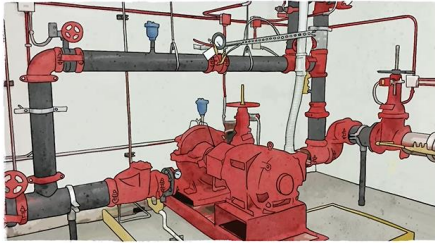


WHAT NEEDS TO BE COORDINATED WITH ELECTRICAL?



M



M

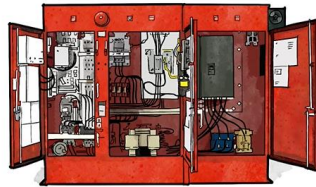
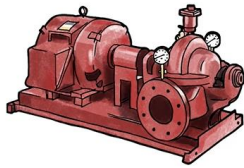
SECTION 912 TABLES
Horizontal Split Case Fire Pumps
60Hz Electric Motor Drive

Section 912 Page 303
Date November 15, 2018
Supersedes December 19, 2017

| Floor | Pressure | | Required Motor HP Rating | | | Maximum Discharge gpm | Pump Model |
|-------|----------|------|--------------------------|----------------|---------------------|--------------------------|------------|
| | PSI | Feet | Motor HP | Speed (RPM) | Horsepower (BHP) | | |
| 5 | 40 | 92 | 30 | 1770 | 22 | 45 | 4-451-11A |
| | 44 | 100 | 30 | 1770 | 22 | 45 | 4-451-11A |
| | 45 | 104 | 30 | 1770 | 22 | 53 | 5-451-15A |
| | 45 | 104 | 35 | 1770 | 28 | 54 | 4-651-11A |
| | 50 | 115 | 25 | 1770 | 28 | 59 | 5-451-15A |
| | | 115 | 25 | 3560 | 25 | 62 | 3-451-10 |
| | | 115 | 25 | 1770 | 31 | 57 | 4-451-11A |
| | 53 | 122 | 30 | 1770 | 34 | 59 | 4-451-11A |
| | | 122 | 30 | 1770 | 31 | 64 | 5-451-15A |
| | | 122 | 30 | 3560 | 30 | 66 | 3-451-10 |
| | 55 | 127 | 30 | 1770 | 33 | 63 | 5-451-15 |
| | | 127 | 30 | 1770 | 33 | 70 | 4-451-11A |
| 127 | | 30 | 3560 | 30 | 72 | 3-451-10 | |
| 60 | 139 | 30 | 1770 | 40 | 74 | 4-451-11A | |
| | 139 | 30 | 1770 | 36 | 74 | 5-451-15A | |
| | 139 | 30 | 3560 | 31 | 79 | 3-451-10 | |
| 65 | 150 | 30 | 1770 | 46 | 79 | 4-451-11A | |
| | 150 | 30 | 1770 | 36 | 89 | 5-451-15A | |
| | 150 | 30 | 3560 | 34 | 92 | 3-451-10 | |
| 68 | 152 | 30 | 1770 | 46 | 89 | 4-451-11A | |
| | 152 | 30 | 1770 | 36 | 89 | 5-451-15A | |
| | 152 | 30 | 3560 | 34 | 83 | 3-451-10 | |
| 70 | 162 | 30 | 1770 | 44 | 91 | 4-451-11A | |
| | 162 | 30 | 3570 | 40 | 75 | 4-471-10C | |
| | 162 | 30 | 1770 | 50 | 83 | 4-451-11A | |
| 72 | 166 | 30 | 1770 | 50 | 83 | 4-451-11A | |
| | 166 | 30 | 1770 | 40 | 85 | 5-451-15A | |
| | 166 | 30 | 3560 | 37 | 88 | 3-451-10 | |
| 75 | 173 | 30 | 1770 | 46 | 88 | 4-451-11A | |
| | 173 | 30 | 3560 | 37 | 92 | 3-451-10A | |
| | 173 | 30 | 3560 | 42 | 78 | 4-471-10C | |
| 80 | 185 | 30 | 1770 | 65 | 88 | 4-451-11A | |
| | 185 | 30 | 1770 | 49 | 88 | 4-451-11A | |
| | 185 | 30 | 1770 | 44 | 91 | 4-451-11A | |
| G | 185 | 30 | 3560 | 40 | 92 | 3-451-10 | |
| | 185 | 30 | 3560 | 41 | 97 | 3-451-10A | |
| | 185 | 30 | 3570 | 46 | 84 | 4-471-10C | |
| | | | 30 | 1770 | 52 | 94 | 4-451-11A |

M

M

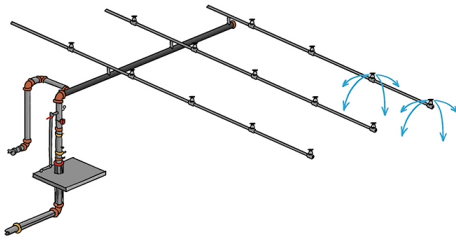
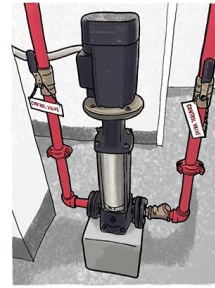


NOTES

Grid of dots for notes.

FIRE PUMP HORSEPOWER

- 15, 20, 25, 30
- 30, 40, 50, 60
- 75, 100, 125, 150
- 150, 200, 250, 300, 350, 400, 450, 500
- 600, 700, 800, 900




QUALITY & SERVICE SINCE 1956 **GENERAL** AIR PRODUCTS ABOUT US 1-800-343-8287

FIRE PROTECTION PRODUCTS FIND A DISTRIBUTOR TRAINING BLOG CONTACT

| | | | |
|---|---|--|--|
|  OL Advance Series Oil-Less Floor Mount Air Compressor with Digital Pressure Switch |  OLT Advance Series Oil-Less Tank Mount Air Compressor with Digital Pressure Switch & Auto Drain |  LT Advance Series Lubricated Tank Mount Air Compressor with Digital Pressure Switch & Auto Drain |  IQ Advance Series Oil-Less Oil-Less Floor & Tank Mount Air Compressor with Digital Pressure Switch |
| View Details | View Details | View Details | View Details |

Factory Pre-Set Mechanical Pressure Switch:

| | | | |
|--|---|--|---|
|  OL Plus Series Oil-Less Floor Mount Air Compressor |  OLT Plus Series Oil-Less Tank Mount Air Compressor |  LT Plus Series Lubricated Tank Mount Air Compressor |  L Plus Series Lubricated Base Mount Air Compressor |
| View Details | View Details | View Details | View Details |



NOTES

Grid of dots for notes.

WHAT NEEDS TO BE COORDINATED WITH ELECTRICAL?



any time. Sign up for an account by following this [link](#). To register your generator please call ECS at 844-431-1207.

WALL-MOUNT NITROGEN GENERATORS INFORMATION

FM Approved and UL 2084 Listed, our equipment meets all applicable standards and is fully compatible with both new and existing nitrogen generator systems.

For use under US, Canada & Mexico. © 2021 ECS. All rights reserved.

| Model | Capacity |
|---------|-------------------------|
| AD-475 | 475 gallon/hr capacity |
| AD-500 | 500 gallon/hr capacity |
| AD-550 | 550 gallon/hr capacity |
| AD-600 | 600 gallon/hr capacity |
| AD-650 | 650 gallon/hr capacity |
| AD-700 | 700 gallon/hr capacity |
| AD-750 | 750 gallon/hr capacity |
| AD-800 | 800 gallon/hr capacity |
| AD-850 | 850 gallon/hr capacity |
| AD-900 | 900 gallon/hr capacity |
| AD-950 | 950 gallon/hr capacity |
| AD-1000 | 1000 gallon/hr capacity |

LEGACY PRODUCTS



General Description

The ECS Advanced Wall Mount Nitrogen Generator is designed to facilitate the Dry Pipe Nitrogen Inerting (DPI) process for existing nitrogen generators in dry pipe and inerting the nitrogen systems. The nitrogen generator utilizes membrane separation technology that produces 99.9% nitrogen gas. The nitrogen generator can be used in both single-phase applications due to the added benefit of air plug mitigation. Cost savings opportunities are available for design assistance.

The Advanced Wall Mount Nitrogen Generator is designed for easy installation and operation. The generator is designed to be installed in a convenient location and can be used in both single-phase and three-phase applications. The generator is designed to be installed in a convenient location and can be used in both single-phase and three-phase applications.

The generator is designed to be installed in a convenient location and can be used in both single-phase and three-phase applications. The generator is designed to be installed in a convenient location and can be used in both single-phase and three-phase applications.

Maintenance

Nitrogen generators require limited maintenance; however, it is advisable to routinely check the generator to ensure functionality, monitor operational temperature, pressure, and flow rate, and to replace any worn or damaged components. For detailed instructions and procedures, please refer to the ECS Advanced Wall Mount Nitrogen Generator Manual.

Specifications

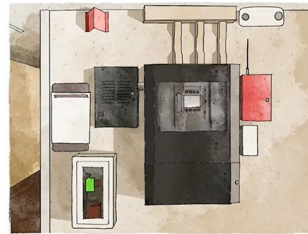
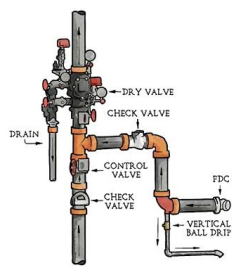
| | |
|------------------------|---|
| Case Dimensions | 24.5" (H) x 18.5" (W) x 9.5" (D) |
| Weight | 110 lbs. |
| Power Supply Available | 120VAC/1PH/60HZ 200V/3PH/60HZ/3W |
| Power Consumption | AD-475: 0.5kW AD-500: 0.5kW AD-550: 0.5kW AD-600: 0.5kW AD-650: 0.5kW AD-700: 0.5kW AD-750: 0.5kW AD-800: 0.5kW AD-850: 0.5kW AD-900: 0.5kW AD-950: 0.5kW AD-1000: 0.5kW |
| Temperature Range | 41°F to 104°F (5°C to 40°C) |
| Replacement Filter | FKWMP3 (annual maintenance) |

Operating Performance

| | |
|---|--|
| Model Number | AD-475 / AD-500 / AD-550 / AD-600 / AD-650 / AD-700 / AD-750 / AD-800 / AD-850 / AD-900 / AD-950 / AD-1000 |
| Total System Capacity | 475 / 500 / 550 / 600 / 650 / 700 / 750 / 800 / 850 / 900 / 950 / 1000 |
| Single System Capacity (at 14.7 psig @ 4 bar) | 250 / 260 / 270 / 280 / 290 / 300 / 310 / 320 / 330 / 340 / 350 / 360 |
| Column Capacity | 1.5M / 1.6M / 1.7M / 1.8M / 1.9M / 2.0M / 2.1M / 2.2M / 2.3M / 2.4M / 2.5M |

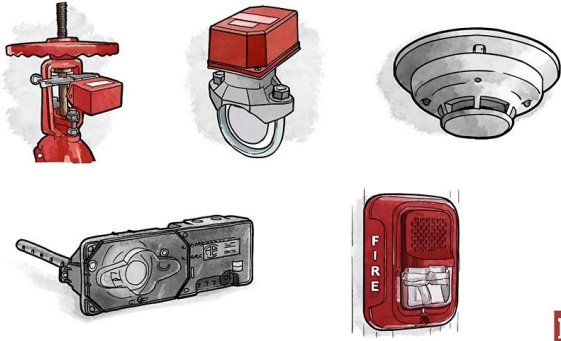
Installation

The ECS Nitrogen Generator is designed to be installed directly to the wall at the installation location inside the room. Allow access to the back of the cabinet for service and provide the wall a location near the nitrogen system connections, a drain, and a dedicated electrical connection. Allow for clearance around units on side and bottom for proper cabinet ventilation. For detailed instructions and procedures, please refer to the ECS Advanced Wall Mount Nitrogen Generator Manual.

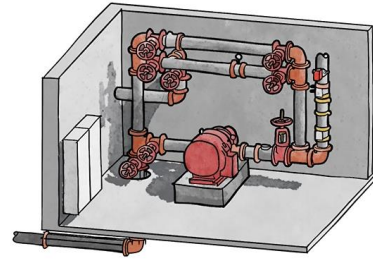


NOTES

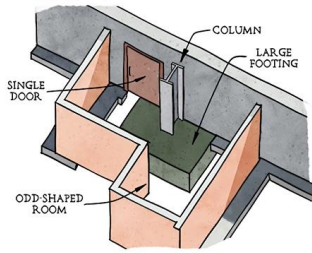
Grid of dotted lines for notes.



M

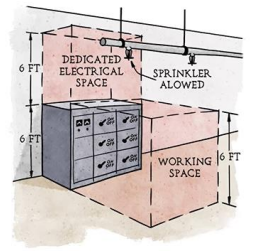


M



M

- AVAILABLE VOLTAGE
- RCP FOR CEILING-MOUNTED LIGHTS, CONTROLS, SPEAKERS
- PANEL LOCATIONS



M

NOTES

Grid area for notes.