

# REQUIRED STRUCTURAL INFORMATION

SPRINKLER COORDINATION WITH ARCHITECTS BY MEYERFIRE UNIVERSITY | OCTOBER 2022

## SUMMARY

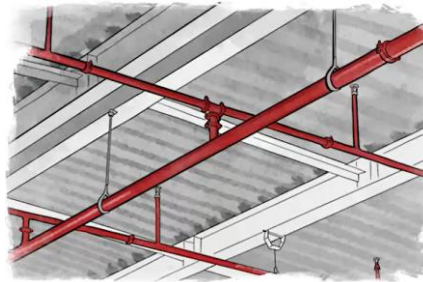
What structural information do you need for suppression design?

- **Ceiling Types:** As the design engineer, you need to understand which type of ceiling you have: flat, horizontal, sloped, and smooth?
- **Obstructed/Unobstructed:** Is the ceiling classified as obstructed or unobstructed construction? This will determine how far away from your ceiling sprinklers can be installed.
- **Slope:** Need to understand if the ceiling is sloped. If you have a sloped ceiling, greater than 2 in 12, it requires a 30% increase in area protection in your calculations.
- **Support for Pipe:** Need to coordinate the weight of the sprinkler pipe, filled with water, with the structural engineer.



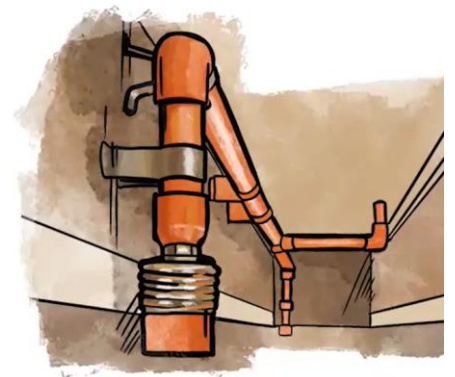
**Obstructed & Unobstructed**

(Is the ceiling obstructed or unobstructed construction)



**Sprinkler Pipe Hangers**

(Understand the various forms of hanging pipe)



**CPVC Pipe**

(Hanger intervals vary based on pipe material)

## CODE/STANDARD REFERENCES



NFPA 13 – 2022: Chapter 17: Installation Requirements for Hanging and Support of System Piping

## VIDEO LINK

[www.meyerfire.com/university/what-structural-information-do-i-need-for-suppression-design](http://www.meyerfire.com/university/what-structural-information-do-i-need-for-suppression-design)

## GET MORE LIKE THIS

This page is from MeyerFire University. Get updates & more here:  
[Join MeyerFire University](#) | [Course & Video Catalog](#) | [Video Library](#)